

MCW Low Profile Chiller

Space-Saving Chiller Design



MCW-LP 5-ton chiller shown

The Marine Air MCW Low-Profile Chiller is designed for locations onboard where height is an obstacle. At 18.25" (464mm) tall, it's about 20 percent shorter than other chillers in its capacity range, but no shorter on high performance and reliability.

A reverse-cycle unit, the MCW-LP can provide cooling or heating. It is a modular chiller available in capacities from 36,000 to 72,000 BTU/hr (3 to 6 tons), and you can use multiple modules in any combination to achieve the total desired capacity. The MCW-LP is available with environmentally safe R-407C or R-410A refrigerant.

A distributor and manifold for refrigerant entering the condenser improve condenser performance compared to units with headers. Additionally, it furthers its performance and reliability with 25 percent more condenser area than similar low-profile units, and an expansion valve that modulates the refrigerant.

Built-in protection devices include high- and low-pressure switches, loop-water flow switch, hot-gas bypass valve, and loop-water freeze sensor. The hot-gas bypass maintains the unit online while heating in low water-temperature conditions.

The MCW-LP has a stainless-steel drain pan, removable PVC water headers that resist corrosion and erosion, and an electrical box that can be remotely mounted up to 6' (1.8m) away from the unit.

Key Benefits

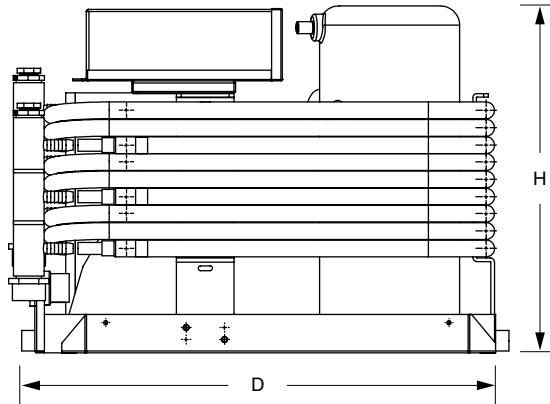
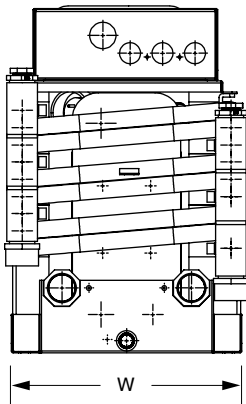
- Fits into short spaces.
- Reverse cycle standard.
- Stainless-steel drain pan.
- 25% more condenser area than similar units.
- Environmentally safe R-407A or R-410A refrigerant.
- Electrical box remotely mounted up to 6' (1.8m) away.
- Removable PVC water headers resist corrosion and erosion.
- Expansion valve modulates refrigerant for improved performance.
- Hot-gas bypass keeps unit online while heating in low water-temperature conditions.
- Refrigerant distributor and manifold improve performance compared to units with headers.

Technical Specifications for MCW Low Profile Chiller

Model	Volt/Hz/Ph	FLA Cool	FLA Heat	LRA	KVA Cool	KVA Heat	MCC	Dimensions			Weight (lbs/kg)
								Height (in/mm)	Depth (in/mm)	Width (in/mm)	
MCW-LP 3-Ton	220/50/1	11.1	15.2	97.0	2.4	3.3	24.0	18.25/464	24.12/613	12.00/305	TBD
	220/50/3	8.5	10.6	95.0	3.2	4.0	19.4				
	230/60/1	12.1	15.9	100.0	2.8	3.7	25.0				
	230/60/3	7.6	9.7	77.0	3.0	3.9	16.0				
	380/50/3	4.4	5.5	41.0	2.9	3.6	10.0				
	460/60/3	3.8	4.9	39.0	3.0	3.9	8.0				
MCW-LP 4-Ton	220/50/1	15.4	21.7	150.0	3.4	4.8	40.0	18.25/464	24.12/613	12.00/305	TBD
	220/50/3	12.3	15.0	139.0	4.7	5.7	29.0				
	230/60/1	13.7	19.5	137.0	3.2	4.5	31.0				
	230/60/3	9.9	12.7	91.0	3.9	5.1	23.0				
	380/50/3	7.1	8.7	58.6	4.7	5.7	14.0				
	460/60/3	5.5	6.5	50.0	4.4	5.2	11.0				
MCW-LP 5-Ton	220/50/1	See note ⁽¹⁾	See note ⁽¹⁾	See note ⁽¹⁾	See note ⁽¹⁾	See note ⁽¹⁾	See note ⁽¹⁾	18.25/464	24.12/613	12.00/305	174/79
	220/50/3	12.5	18.4	172.0	4.8	7.0	29.0				
	230/60/1	18.2	25.3	169.0	4.2	5.8	45.0				
	230/60/3	13.3	16.7	128.0	5.3	6.7	29.0				
	380/50/3	6.8	8.9	67.0	4.5	5.9	14.0				
	460/60/3	6.7	8.4	63.0	5.3	6.7	14.0				

Notes:

⁽¹⁾ Use 230/60/3 compressor with frequency drive.



Dealer:

DOMETIC MARINE

2000 N. Andrews Ave. Ext. I Pompano Beach, FL 33069 USA | 954-973-2477 | Fax 954-979-4414
 www.DometicUSA.com | MarineSales@DometicUSA.com

United States & Canada Tech Support

8:00 AM to 5:00 PM Eastern Time: 800-542-2477
 After hours and weekends: 888-440-4494

International Sales & Service:

Europe & the Middle East: Call +44(0)870-330-6101
 For all other areas visit our website to find your nearest distributor.

