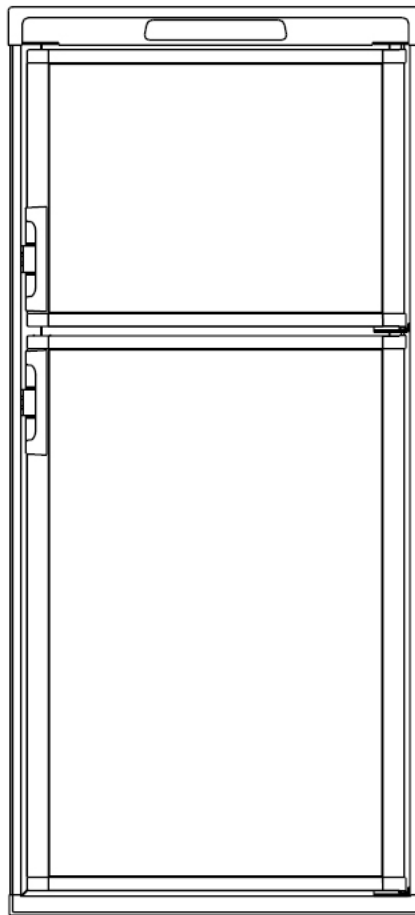




DOOR PANELS FOR REFRIGERATOR MODELS

DM2652 RM2652 DM2662 RM2662
RM3662 RM3663 DM2852 RM2852
DM2862 RM2862 DM3862 RM3862
RM3863 RM4872 RM4873



USA
SERVICE OFFICE
Dometic Corporation
1120 North Main Street
Elkhart, IN 46514

**For Service Center
Assistance Call:**
800-544-4881

INSTALLATION INSTRUCTIONS

DOOR PANELS
3106863.073(X)
3106863.081(X)

REVISION A
Form No. 3312203.171 07/18
©2018 Dometic, LLC
LaGrange, IN 46761

INSTALLATION INSTRUCTIONS

MOUNTING THE DOOR PANEL(S)

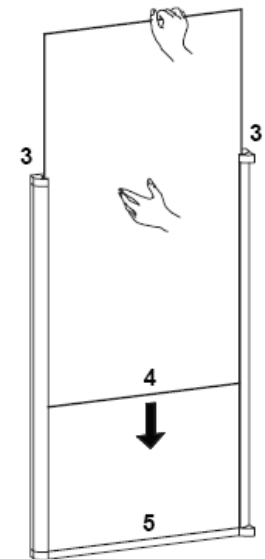
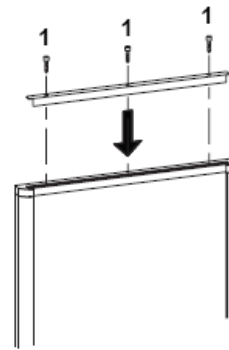
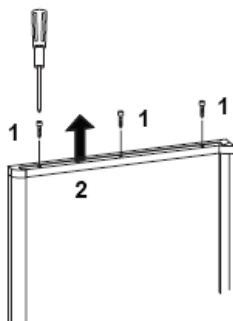
The refrigerator is normally delivered without door panel(s). Before starting the mounting work, read this instruction thoroughly and check that the panel dimensions are in compliance with those given in the following table:

PANEL DIMENSIONS max. thickness 5/32" (4 mm)					
		Height		Width	
		max	min	max	min
UPPER					
	mm	403	401	527	524
	inch	15-27/32	15-25/32	20-3/4	20-5/8
LOWER /SINGLE DOOR					
DM2652 RM2652	mm	827	825	527	524
DM2662 RM2662					
RM3662					
RM3663	inch	32-9/16	32-1/2	20-3/4	20-5/8
DM2852 RM2852	mm	983	981	527	524
DM2862 RM2862					
DM3862 RM3862					
RM3863	inch	38-11/16	38-5/8	20-3/4	20-5/8

With screws

To mount the panel, follow these steps:

1. Open the door 90 degrees.
2. On new refrigerators, the decoration strip is taped inside the door; if installed on the door, remove the door decoration strip (2) by removing its three screws (1)
NDR1292: Fresh food compartment door - remove three screws (1). Freezer compartment door- remove two screws.
3. Insert the vertical edges into the grooves of the door frame (3).
4. Push the panel downwards so that the lower horizontal edge of the panel (4) is fitted into the bottom groove (5).
5. Put the decoration strip across the door so that the gap is covered. Secure the decoration strip with the screws removed in step 2.



Snap in

To mount the panel, follow these steps:

1. Open the door 90 degrees.
2. On new refrigerators, the decoration strip is taped inside the door; if installed on the door, remove the door decoration strip (2) by gently pushing the four tabs away with a flat blade screwdriver (1).
3. Insert the vertical edges into the grooves of the door frame (3).
4. Push the panel downwards so that the lower horizontal edge of the panel (4) is fitted into the bottom groove (5).
5. Snap in the decoration strip (2).

