

# ↗ DOMETIC AWNINGS 8700 SERIES



**Dometic 8700**

EN

**Awning**

Service Manual

© 2022 Dometic Group. The visual appearance of the contents of this manual is protected by copyright and design law. The underlying technical design and the products contained herein may be protected by design, patent or be patent pending. The trademarks mentioned in this manual belong to Dometic Sweden AB. All rights are reserved.

Please read these instructions carefully and follow all instructions, guidelines, and warnings included in this product manual in order to ensure that you install, use, and maintain the product properly at all times. These instructions **MUST** stay with this product.

By using the product, you hereby confirm that you have read all instructions, guidelines, and warnings carefully and that you understand and agree to abide by the terms and conditions as set forth herein. You agree to use this product only for the intended purpose and application and in accordance with the instructions, guidelines, and warnings as set forth in this product manual as well as in accordance with all applicable laws and regulations. A failure to read and follow the instructions and warnings set forth herein may result in an injury to yourself and others, damage to your product or damage to other property in the vicinity. This product manual, including the instructions, guidelines, and warnings, and related documentation, may be subject to changes and updates. For up-to-date product information, please visit [documents.dometic.com](http://documents.dometic.com).

# Table of contents

- 1 Explanation of symbols . . . . . 3**
- 2 Important safety instructions for installation . . . . . 4**
- 3 Intended use . . . . . 4**
- 4 Servicing the awning . . . . . 5**
  - 4.1 Removing the awning . . . . . 5
  - 4.2 Removing the torsion rods . . . . . 9
  - 4.3 Replacing the awning fabric/fabric roller tube . . . . . 12
  - 4.4 Replacing the torsion rods . . . . . 14
  - 4.5 Wind torsion rods . . . . . 17
  - 4.6 Reattach torsion . . . . . 18
  - 4.7 Remount the awning . . . . . 19
  - 4.8 Verifying the installation . . . . . 19
- 5 Disposal . . . . . 19**

## 1 Explanation of symbols



**WARNING!**  
**Safety instruction:** Indicates a hazardous situation that, if not avoided, could result in death or serious injury.



**CAUTION!**  
**Safety instruction:** Indicates a hazardous situation that, if not avoided, could result in minor or moderate injury.



**NOTICE!**  
Indicates a situation that, if not avoided, can result in property damage.

**NOTE**

Supplementary information for operating the product.

## 2 Important safety instructions for installation

**Please observe the prescribed safety instructions and stipulations from the vehicle manufacturer and service workshops.**

**WARNING!**

- If you do not have sufficient technical knowledge for installing components in vehicles, you should have a specialist to service your awning.

## 3 Intended use

This product is only suitable for the intended purpose and application in accordance with these instructions.

This manual provides information that is necessary for proper installation and/or operation of the product. Poor installation and/or improper operating or maintenance will result in unsatisfactory performance and a possible failure.

The manufacturer accepts no liability for any injury or damage to the product resulting from:

- Incorrect assembly or connection, including excess voltage
- Incorrect maintenance or use of spare parts other than original spare parts provided by the manufacturer
- Alterations to the product without express permission from the manufacturer
- Use for purposes other than those described in this manual

Dometic reserves the right to change product appearance and product specifications.

## 4 Servicing the awning

### NOTICE! Damage hazard

- Prepare an area large enough for the fabric roller tube assembly and the unrolled awning fabric.  
The area must be smooth, clean, and clear of debris to prevent fabric damage.



### NOTE

- A stepladder may be necessary to reach awning rail.

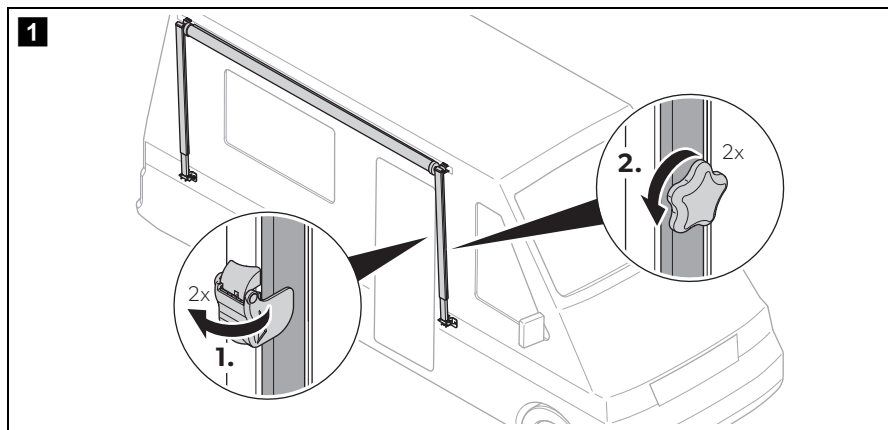
### 4.1 Removing the awning

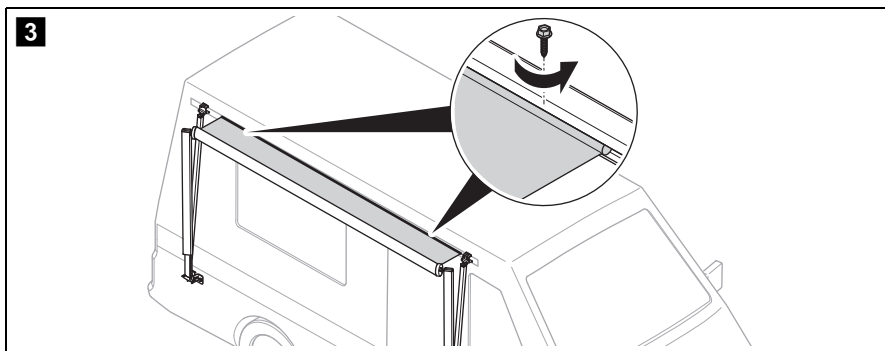
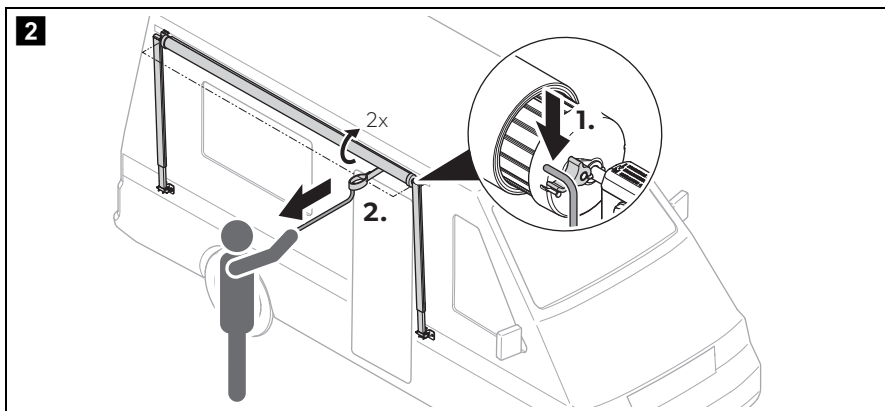
- Proceed as shown to remove the awning (fig. **1**, page 5 to fig. **10**, page 9).

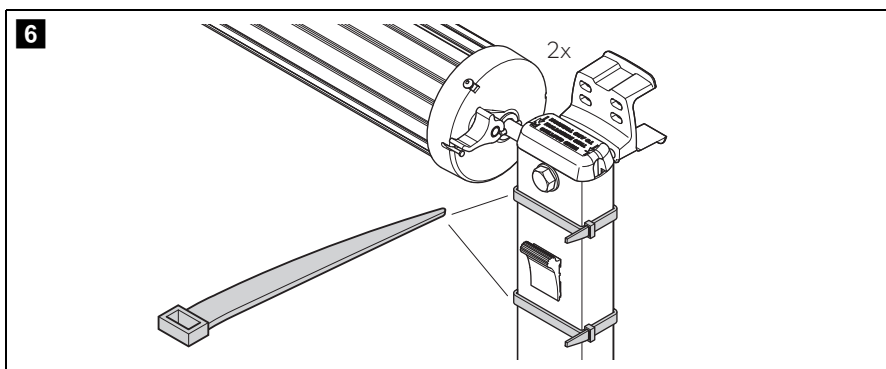
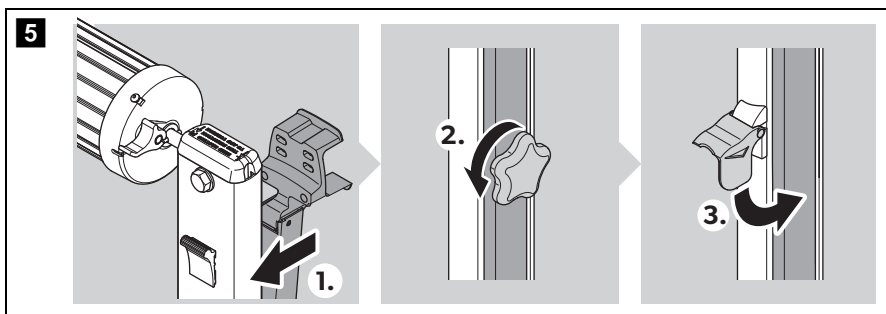
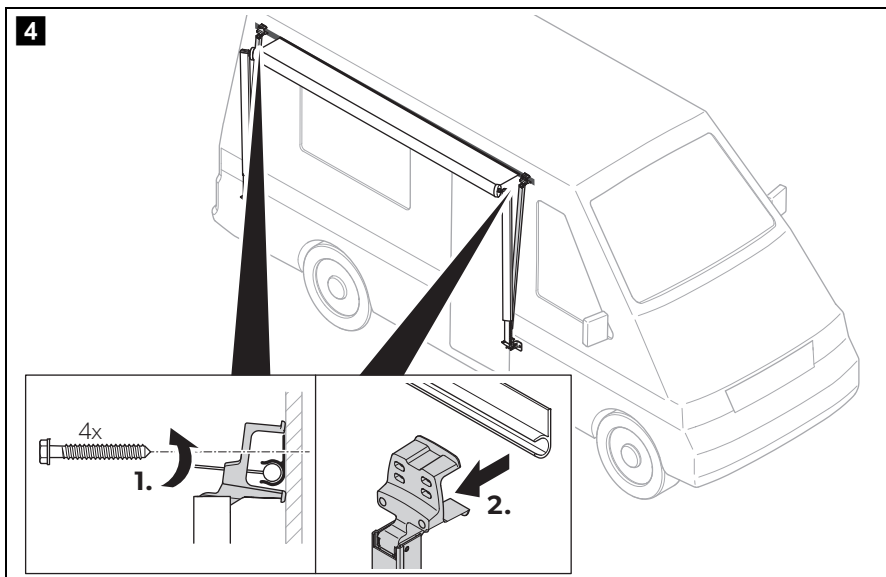


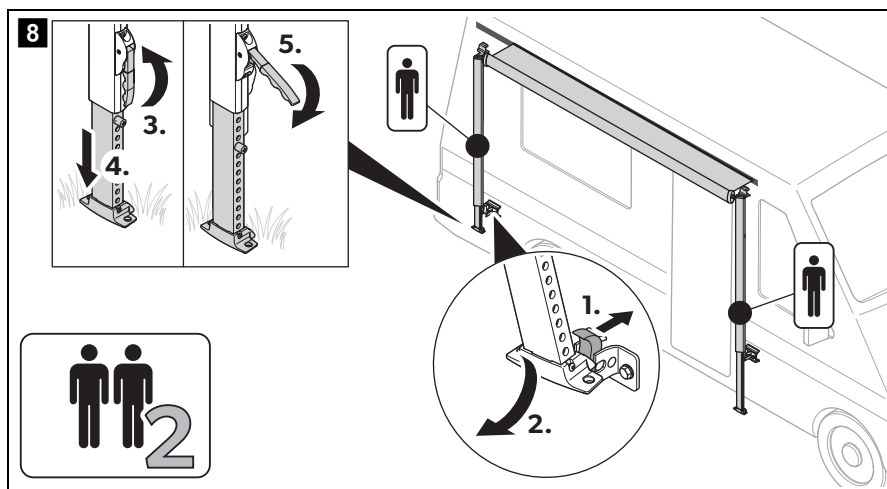
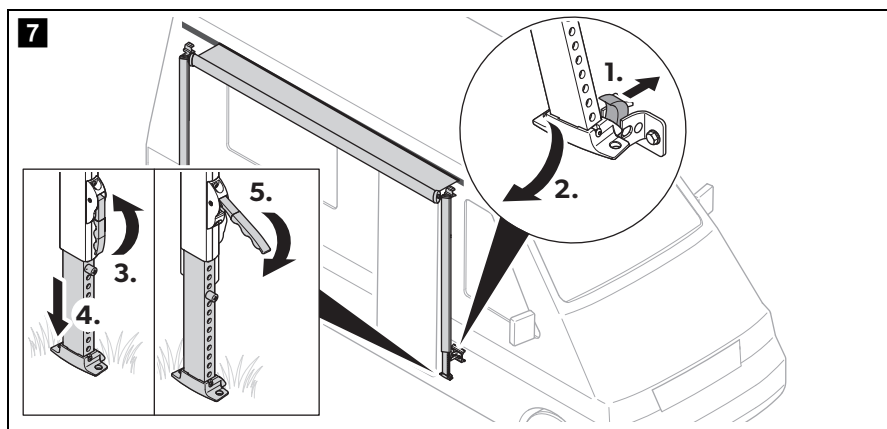
### NOTE

Save all mounting materials you remove for reinstallation later.







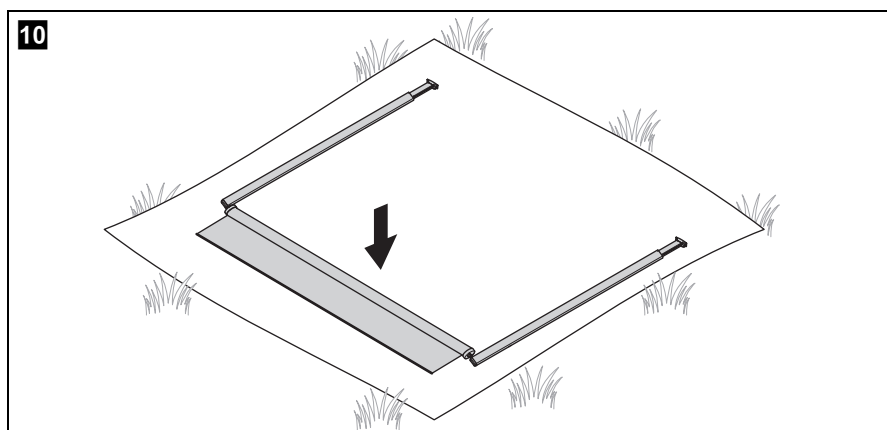
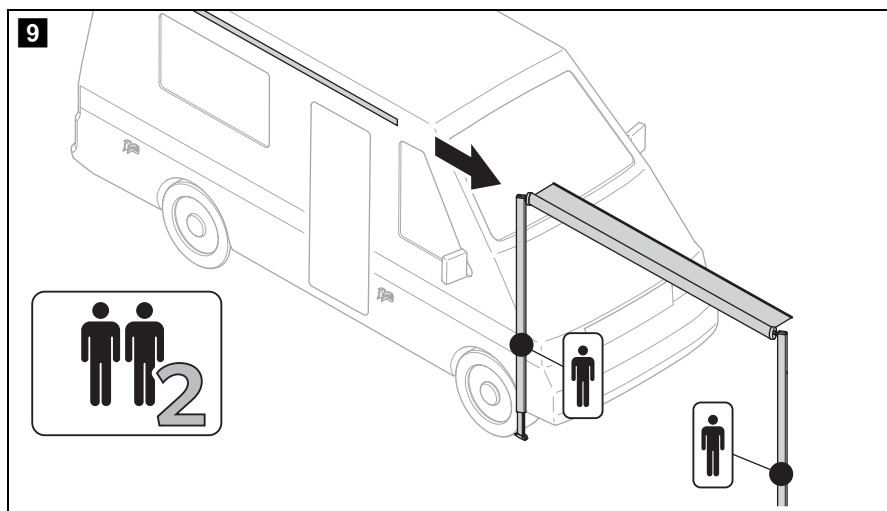
**CAUTION! Lifting hazard**

Use proper lifting technique and control when lifting product.

**NOTICE! Damage hazard**

- Keep both arm assemblies parallel to each other to avoid twisting.
- Maintain roll down position of the awning safety lock to prevent the fabric roller tube assembly from uncontrolled unwinding when the fabric is removed from the awning rail.





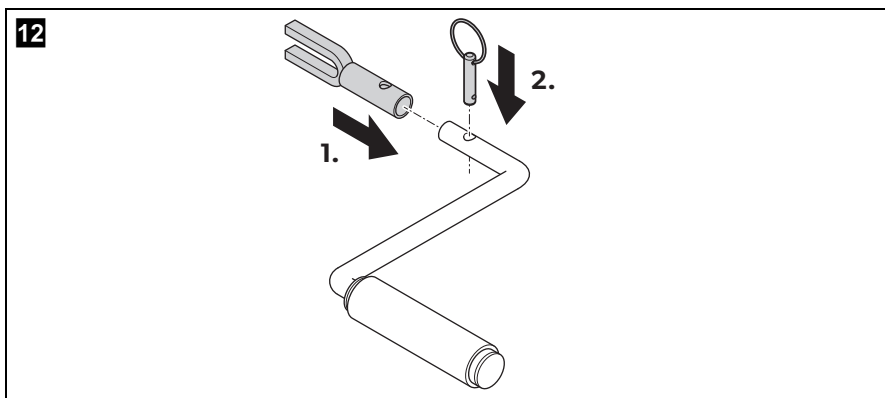
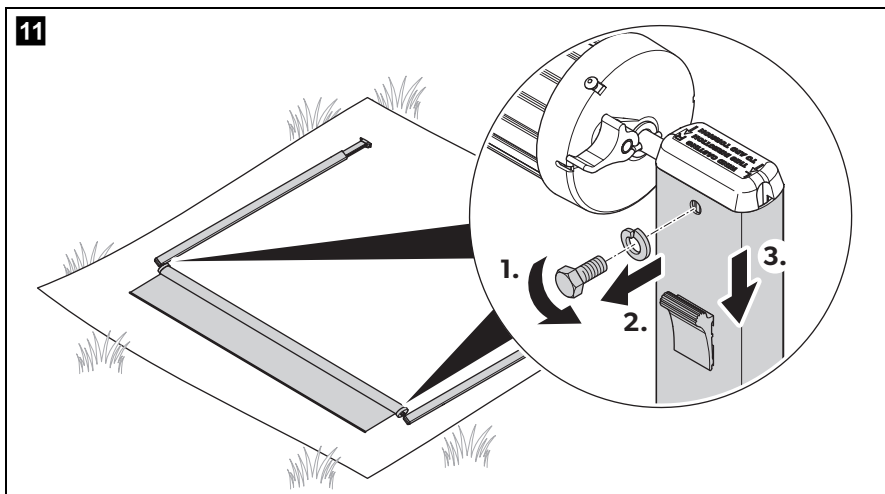
## 4.2 Removing the torsion rods

- Proceed as shown to remove the torsion rods (fig. **11**, page 10 to fig. **17**, page 12).



### **WARNING! Health hazard**

Do **not** remove the awning from arm assembly until the torsion rod is securely pinned. Otherwise rapid casting spin off will occur. Spring tension will attempt to spin the fabric roller tube quickly and unexpectedly.

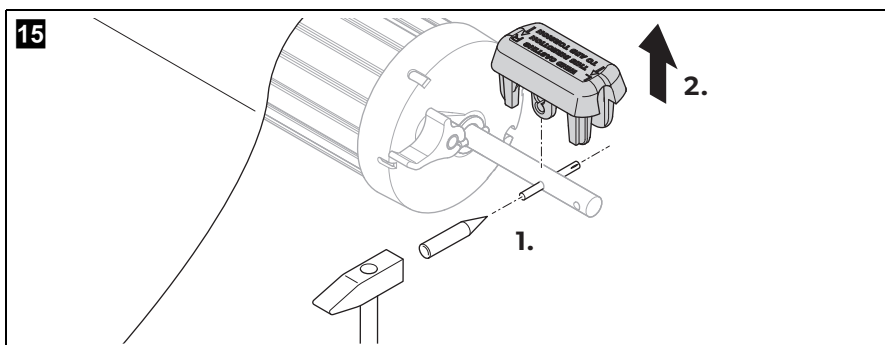
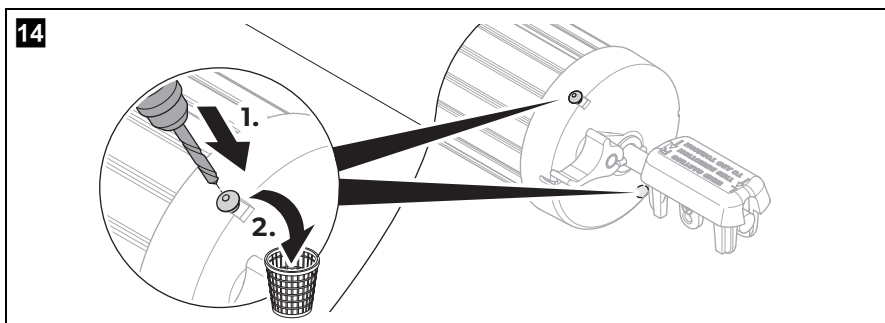
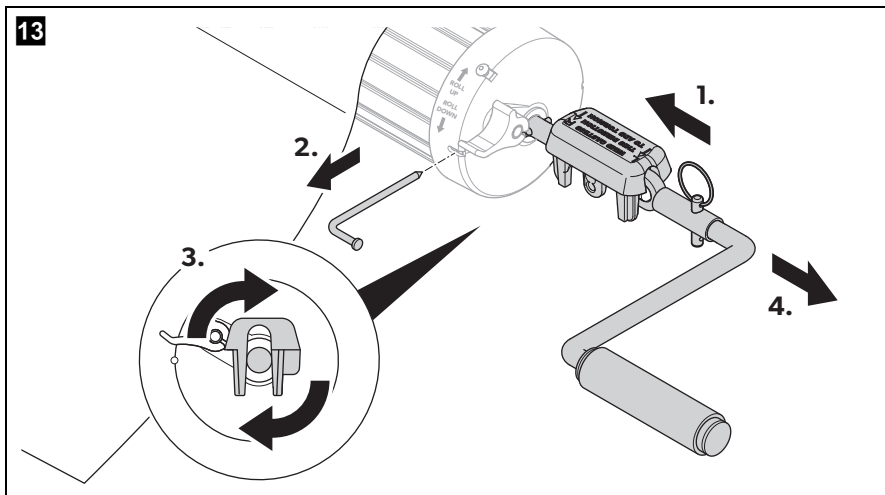


**WARNING! Health hazard**

- Do **not** remove the nail from torsion rod until the arm cap is securely held. Otherwise rapid casting spin off will occur. Spring tension will attempt to spin the arm cap and/or fabric roller tube quickly and unexpectedly.
- Use extreme care when winding/unwinding the arm cap. If **not** controlled, rapid casting spin off will occur. Spring tension will attempt to spin the arm cap and/or fabric roller tube quickly and unexpectedly.

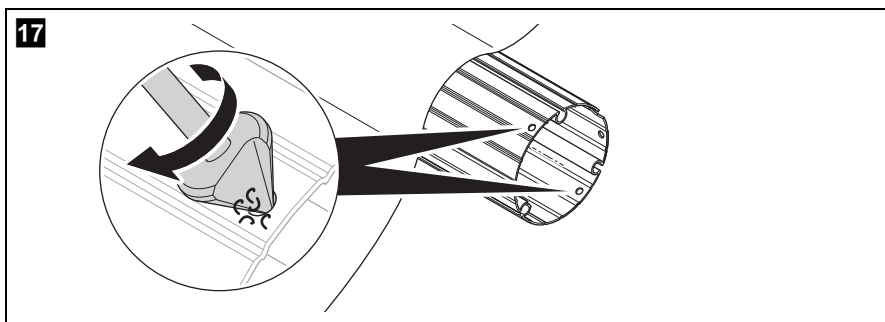
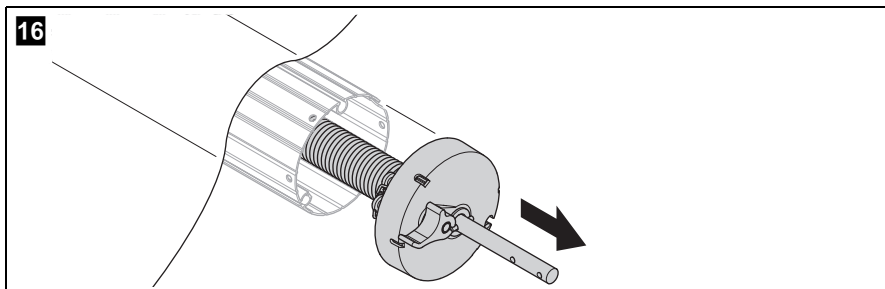
**NOTE**

Pin both torsions to prevent uncontrolled unwinding of spring, or unintended awning movement.



**WARNING! Health hazard**

Do **not** remove the torsion from the fabric roller tube until spring tension is released. If the torsion rod is also **not** pinned at end cap, rapid casting spin off will occur. Spring tension will attempt to spin the arm cap and/or end cap quickly and unexpectedly.



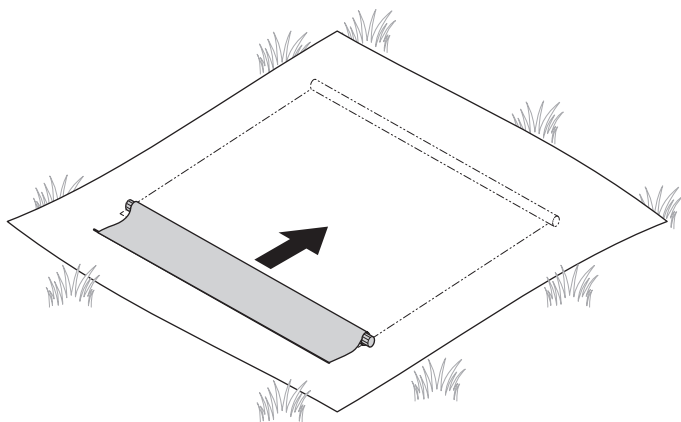
### 4.3 Replacing the awning fabric/fabric roller tube

**NOTE**

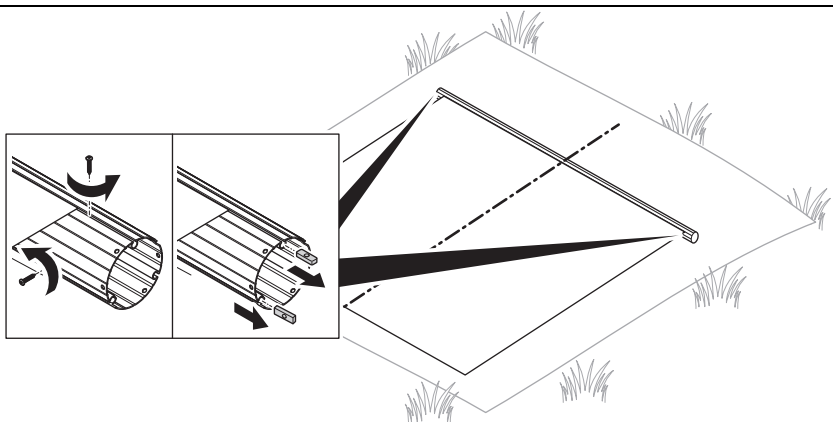
- If both fabric roller tube **and** awning fabric will be replaced, discard the old ones.
- If replacing the awning fabric, leave the old fabric on the work surface for added protection of new fabric during the installation procedure.

- Proceed as shown to remove the awning fabric and/or the fabric roller tube (fig. **18**, page 13 to fig. **22**, page 14).

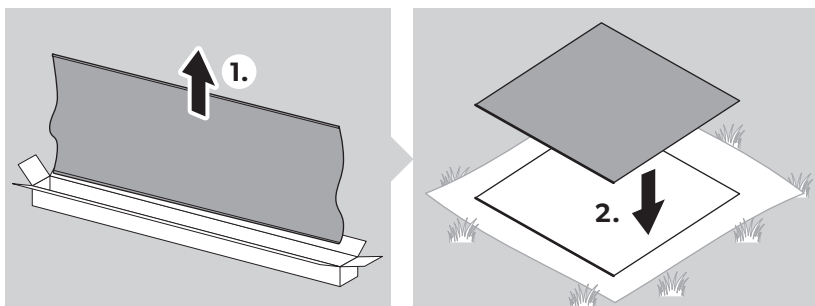
18



19

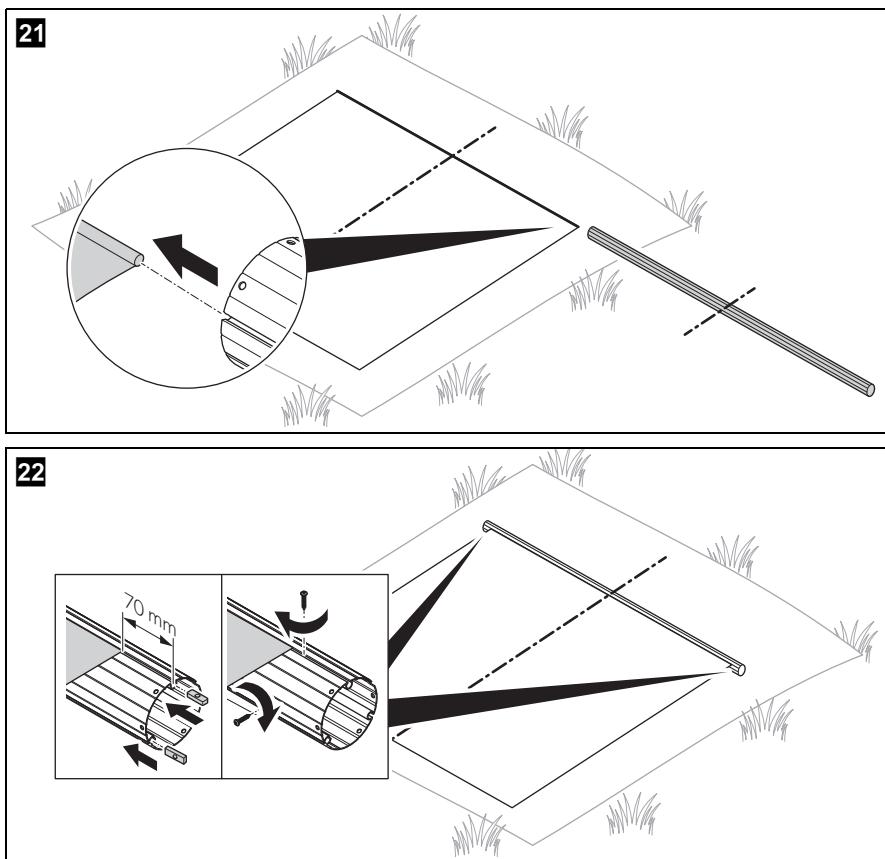


20



**NOTE**

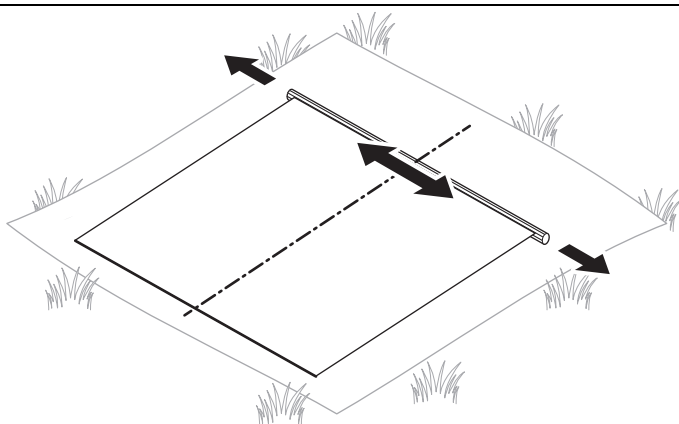
Discard the old fabric roller tube if damaged.



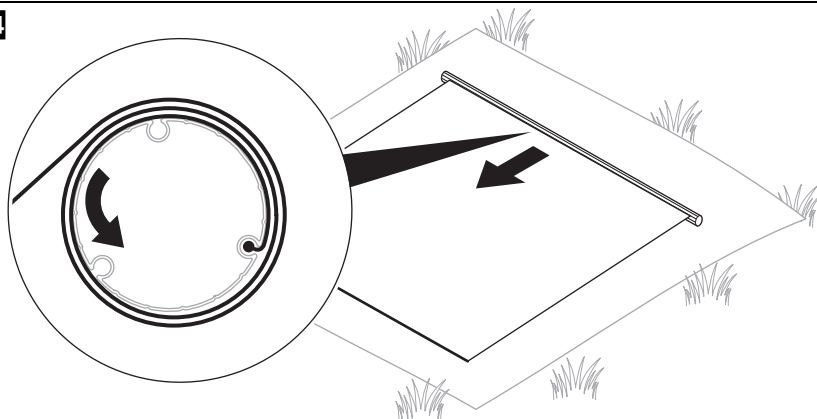
## 4.4 Replacing the torsion rods

- Proceed as shown to replace the torsion rods (fig. 23, page 15 to fig. 27, page 16).

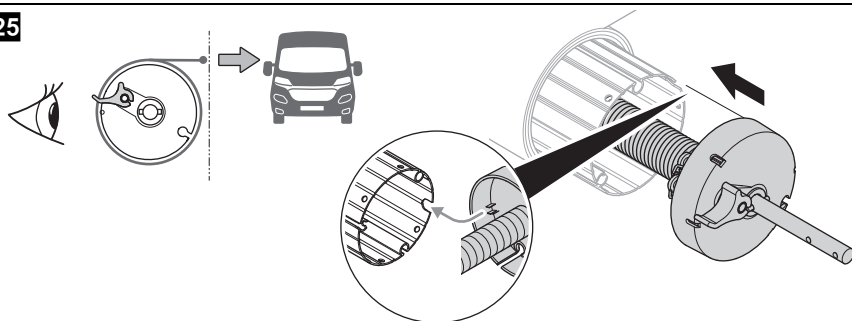
23

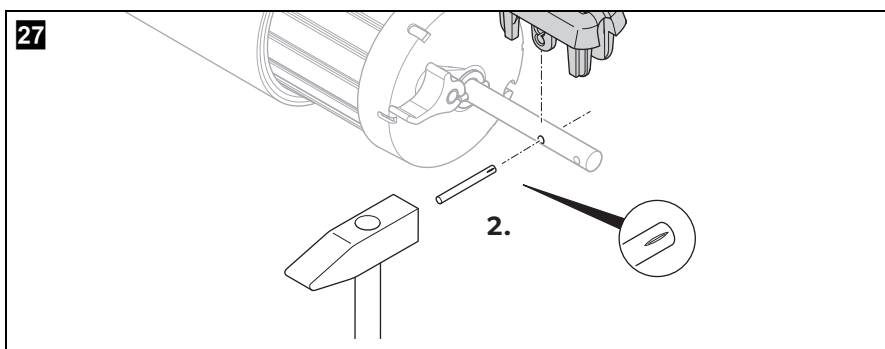
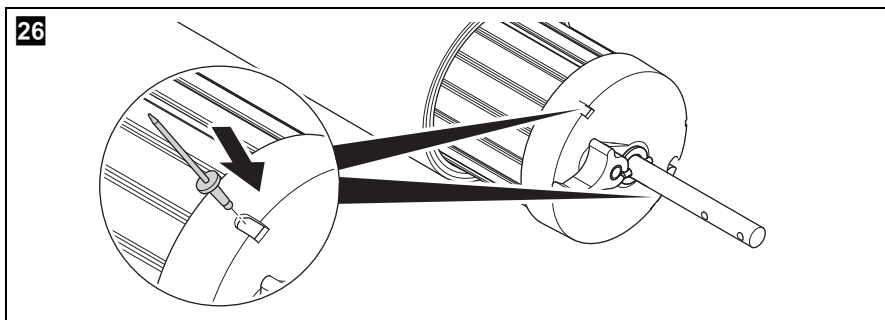


24



25





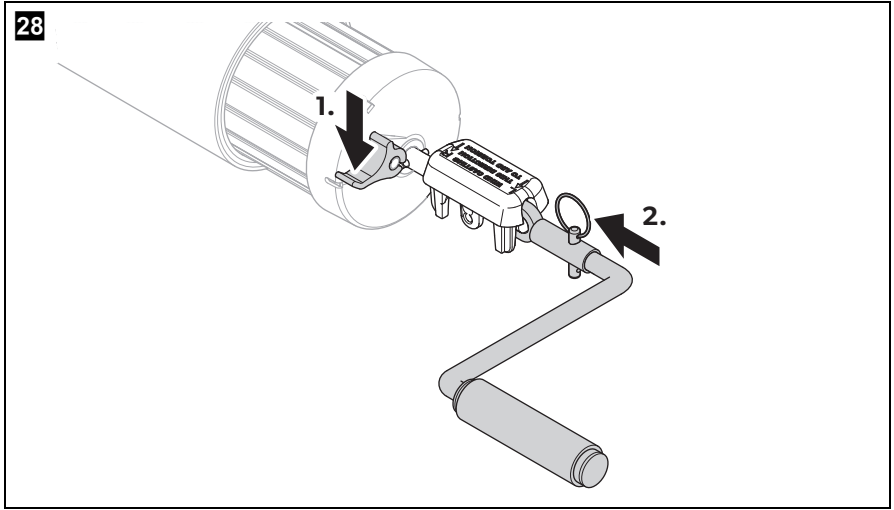


4.5 Wind torsion rods

- Proceed as shown to reattach the torsion rods (fig. 28, page 17 to fig. 29, page 18).



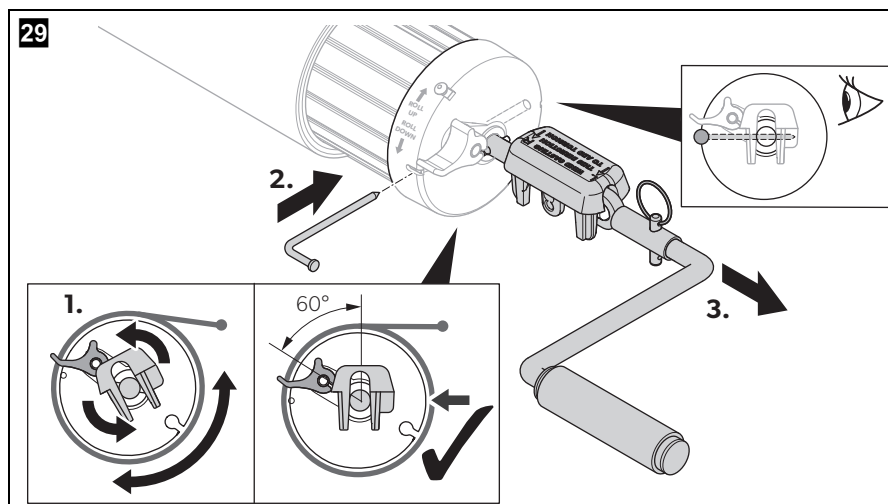
**WARNING! Health hazard**  
Use extreme care when winding/unwinding the arm cap. If **not** controlled, rapid casting spin off will occur. Spring tension will attempt to spin the arm cap and/or fabric roller tube quickly and unexpectedly.



The number of turns to achieve the correct torsion spring tension depends on the awning model and width (see the following table).

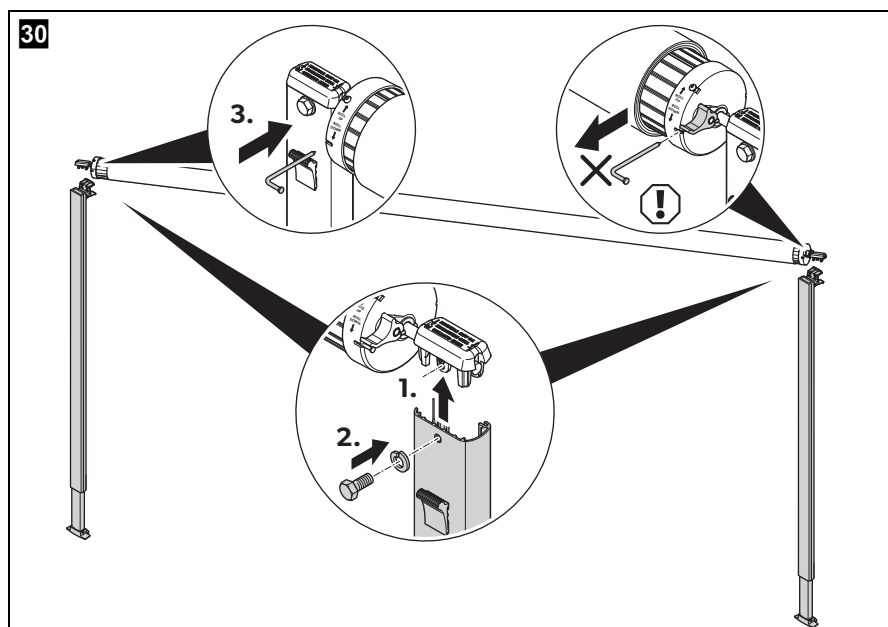
If awning is installed on the RV and extended 2 revolutions from the awning rail, add 2 turns to the number of turns in table. Add 6 additional turns to torsion spring when awning is fully extended.

Awning width	Number of turns
8 ft – 12 ft.	8
13 ft – 14 ft.	9
15 ft. – 16 ft.	10
17 ft. – 21 ft.	12



## 4.6 Reattach torsion

► Proceed as shown to reattach the torsion rods (fig. **30**, page 18).



**WARNING!**

Do **not** remove the nail from torsion rod until both arm caps are secured to corresponding front channels, and awning safety lock lever is in roll down position. Otherwise, rapid casting spin off will occur. Spring tension will attempt to spin the hardware and/or fabric roller tube quickly and unexpectedly.

## 4.7 Remount the awning

- Proceed as shown in the installation and operating manual.

## 4.8 Verifying the installation

- Verify the installation by operating the awning according to verify all parts are functioning correctly (see Installation and Operating Manual).

# 5 Disposal



- Place the packaging material in the appropriate recycling waste bins whenever possible.
- Consult a local recycling center or specialist dealer for details about how to dispose of the product in accordance with the applicable disposal regulations.



---

**dometic.com**

---

**YOUR LOCAL  
DEALER**

**[dometic.com/dealer](https://dometic.com/dealer)**

**YOUR LOCAL  
SUPPORT**

**[dometic.com/contact](https://dometic.com/contact)**

**YOUR LOCAL  
SALES OFFICE**

**[dometic.com/sales-offices](https://dometic.com/sales-offices)**