

Blizzard Kit, EPP Plates, Fasteners

3316781.000

INTRODUCTION	2
SAFETY INSTRUCTIONS AND DOCUMENT SYMBOLS	2
A. Recognize Safety Information	2
B. Understand Signal Words	2
C. Supplemental Directives	2
D. General Safety Messages	2
GENERAL INFORMATION	2
INSTALLATION	3
A. Installing The EPP Foam Plates	3



Read these instructions carefully. These instructions MUST stay with this product.

INTRODUCTION

This document describes the installation of two expanded polypropylene (EPP) foam plates in Blizzard AC Units. The purpose of the foam plates is to allow proper drainage.

Dometic Corporation reserves the right to modify product appearances and specifications without notice.

SAFETY INSTRUCTIONS AND DOCUMENT SYMBOLS

This manual has safety information and instructions to help you eliminate or reduce the risk of accidents and injuries.

A. Recognize Safety Information



This is the safety alert symbol. It is used to alert you to potential physical injury hazards. Obey all safety messages that follow this symbol to avoid possible injury or death.

B. Understand Signal Words

A signal word will identify safety messages and property damage messages, and will indicate the degree or level of hazard seriousness.

WARNING indicates a hazardous situation that, if **NOT** avoided, could result in death or serious injury.

CAUTION indicates a hazardous situation that, if **NOT** avoided, could result in minor or moderate injury.

NOTICE is used to address practices **NOT** related to physical injury.



Indicates additional information that is not related to physical injury.

C. Supplemental Directives



Read and follow all safety information and instructions to avoid possible injury or death. Read and understand these instructions before [installation / use / service / maintenance] of this product.

Incorrect [installation / operation / service / maintenance] of this product can lead to serious injury.

The installation **MUST** comply with all applicable local or national codes, including the latest edition of the following standards:

U.S.A.

- ANSI/NFPA70, National Electrical Code (NEC)
- ANSI/NFPA 1192, Recreational Vehicles Code

CANADA

- CSA C22.1, Parts I & II, Canadian Electrical Code
- CSA Z240 RV Series, Recreational Vehicles

D. General Safety Messages

WARNING Failure to obey the following warnings could result in death or serious injury:

- This product **MUST** be [installed / serviced] by a qualified service technician.
- ELECTRICAL SHOCK HAZARD. Disconnect 120 Vac power from product. Failure to obey this warning could result in death or serious injury.

GENERAL INFORMATION

BASIC COMPONENTS

41-03-396PF12 Left EPP Plate

41-03-396PF13 Right EPP Plate

INCLUDED HARDWARE

(2) 49-TN-M4010A1B Washer

(2) 3310229.000 #8-18 x 3/4 Screw

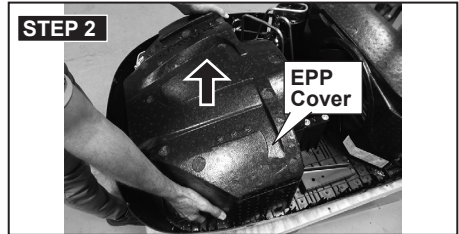
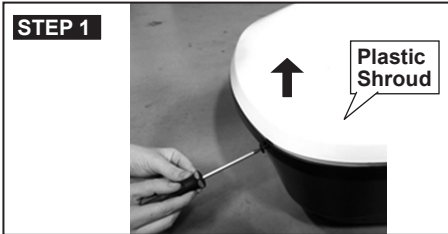
REQUIRED TOOLS

#3 Phillips Bit or Robertson Bit Screwdriver

Standard Phillips Screwdriver

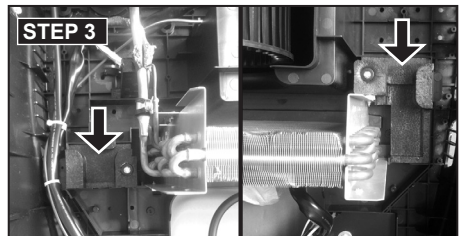
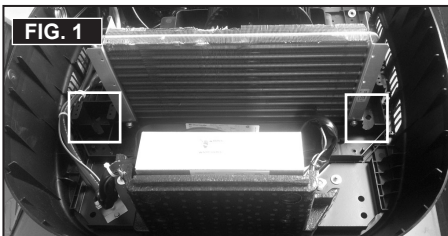
INSTALLATION

A. Installing The EPP Foam Plates



- Lift off the plastic shroud after using a #3 Phillips bit or Robertson bit to remove the nine screws.

- Remove the EPP cover.

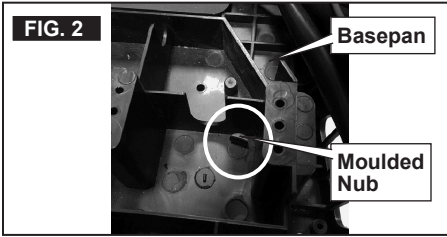


- Place the EPP foam plates on the appropriate side of the evaporator and fasten in place using the provided washer and screw. Each foam plate is structured to only fit on one side of the evaporator.



For earlier versions of the Blizzard basepan, remove the moulded nub for easier installation of the EPP Plates. See FIG 2.

INSTALLATION



Reverse steps 1 and 2 to reattach the covers to the AC unit.