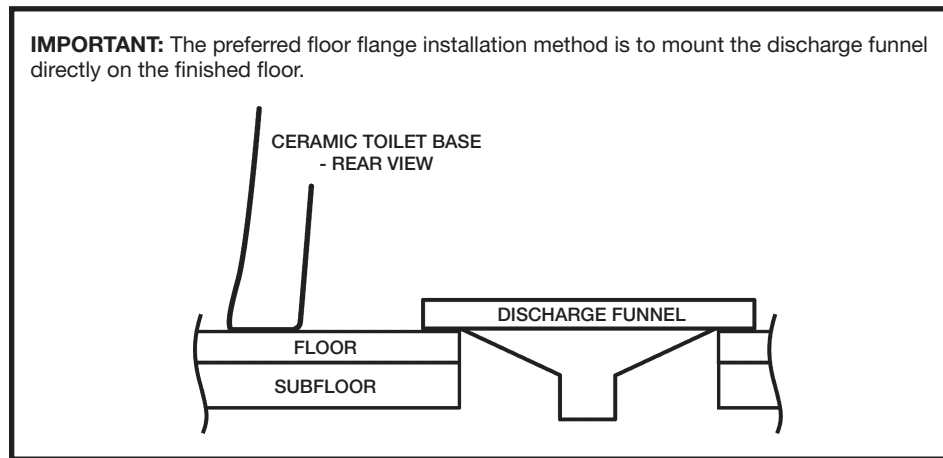


**VACUFLUSH® 4806 TOILET INSTALLATION GUIDE**

**Toilet installation specifications**

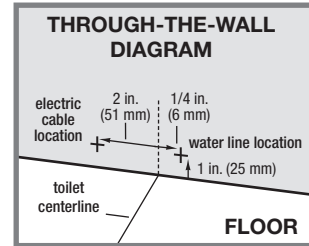
Electrical	Amp draw (average)	2 amps at 12 V DC; 1 amp at 24 V DC
	Fuse	2-amp internal fuse (resettable) *
Water Supply	Fitting	0.5 in. NPT
	Flow rate	2.0 gpm/7.6 lpm minimum required at toilet
Discharge	Size	1.5 in./38 mm ID PVC pipe or sanitation hose
	Horizontal run	50 ft./15 m maximum to vacuum source
	Vertical run	6 ft./1.8 m maximum to vacuum source
Required components	Electric flush switch	Dometic VFS or VFP switch (purchased separately)
	Vacuum source	VacuFlush vacuum generator or VacuFlush holding tank system (purchased separately)

\* Circuit board fuse resets by turning toilet's electrical power off, then back on. Specifications subject to change without notice.



- Carefully unpack toilet and place it in the approximate position intended. Assure that adequate clearance is available for opening the seat and lid. Check the front and sides of the toilet to insure that it will set flat against the floor.
- Insert 0.75-in. (19 mm) spacer between toilet and wall, and reposition toilet against spacer (fig. 1), making sure back of toilet is parallel to back wall.
- Mark floor at bottom front of toilet (fig. 2). Remove toilet and 19 mm spacer, then place floor mounting template where toilet was originally positioned, aligning front edge of template with mark on floor representing front edge of toilet.

**Note**  
Choose an inlet configuration for the electrical wiring and water lines - through the rear wall or through the floor. Refer to the Through-the-Wall diagram to plan access holes if that is the intended application.



- Mark all hole centers through template (fig. 3).
- Remove template from floor. Drill all access and fastener holes as indicated on template (fig. 4). If electrical wires and water supply are being routed through the wall, be sure to drill those two holes only through the wall.
- Determine the best location for the flush switch panel. It is recommended that the flush switch be near the toilet but not hidden by the toilet lid in the "up" position. Avoid a location susceptible to direct water spray. Cable provided with flush switch must reach from switch location to connection in toilet base. Follow instructions provided with flush switch to create access hole.
- Insert the discharge funnel into the hole with the outlet pointing in the direction of the discharge plumbing (fig. 4). Mark the floor through the eight countersunk mounting holes in the flange. Remove the funnel and drill the eight pilot holes with an 11/64-inch (4 mm) drill bit.
- Route the discharge hose from the vacuum generator or vacuum tank up through the discharge funnel hole. Lubricate the inside of the hose and outside of discharge funnel outlet with silicone grease and install the hose onto the funnel outlet. Secure the connection with two stainless steel hose clamps (fig. 5).
- Insert four T-bolts into the discharge funnel from the underside. Insert the discharge funnel with connected hose into the discharge hole and secure to the floor with the eight #12x1-1/2-inch flat head screws provided (fig. 6).
- Install the flange gasket over the T-bolts (fig. 7).
- Install flange adapter with words "THIS SIDE UP" facing up. Tighten adapter to discharge funnel using four flat washers and hex nuts. Tighten in criss-cross pattern (fig. 8).
- Route 0.5-inch (13 mm) diameter water line from the fresh water source through the 1.5-inch (38 mm) hole in the wall or floor and attach a 1/2-inch NPT fitting (fig. 8).

**Note**  
An accessible shut-off valve should be placed in the water line to the toilet for maintenance or repair.

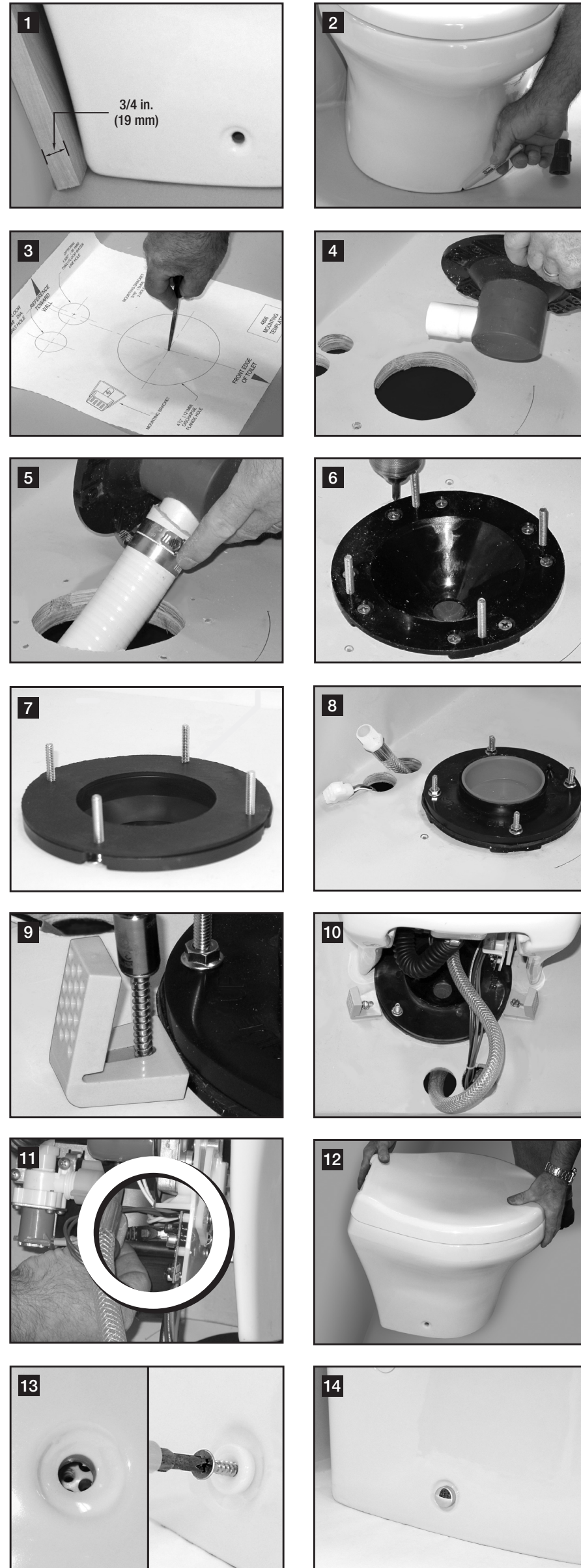
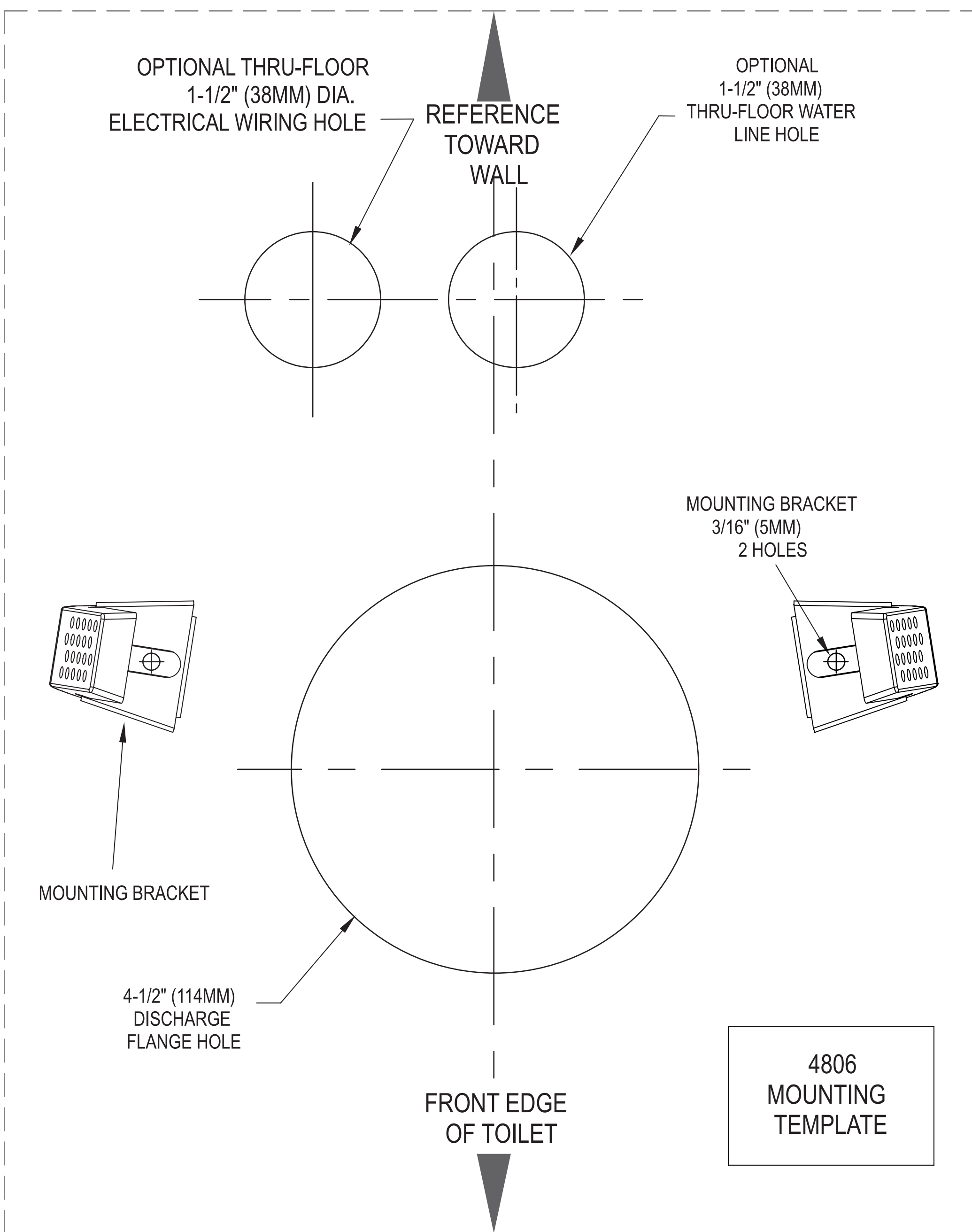
- WITH ELECTRICAL POWER OFF, route electrical cables/wiring from vacuum generator and power source through 1.5-inch (38 mm) hole (fig. 8). (Refer to wiring diagram on separate toilet model's parts list. If wiring connector shown here is not being used, refer to wiring diagram to make proper connections).
- Install flush switch according to its instructions and route electrical cable through the 1.5-inch (38 mm) wiring hole at the toilet.
- Secure the toilet mounting brackets to the floor using the #14 x 2 1/2-inch (65 mm) hex washer head screws provided. Be sure to mount the brackets as shown on the template (fig. 9).

**Note**  
Do not completely tighten hex-head screws to floor - allow brackets to slightly slide. Brackets will tighten when fastening toilet to brackets.

- REMOVE THE RED PROTECTIVE INSERT FROM THE FLANGE ADAPTER. Set the toilet in front of the flange adapter. Connect the flexible water hose to the 1/2-inch NPT fitting on the inlet water line. Connect the cable/wiring from vacuum generator and power source to the toilet's vacuum generator-power source cables/wiring (fig. 10). Connect the cable/wiring from flush switch to the toilet's circuit board located in its base (fig. 11).

**Caution!**  
DO NOT ATTEMPT TO SLIDE TOILET OVER THE FLANGE ADAPTER. THE TOILET MUST BE SET DOWN INTO THE FLANGE ADAPTER TO PREVENT POSSIBLE DAMAGE.

- Lubricate the O-ring around the bottom of the toilet base with silicone grease. Pick up the toilet and insert plastic toilet base assembly into flange adapter (fig. 12). Make sure mounting brackets on floor do not interfere with bottom of ceramic toilet. If the mounting brackets interfere, adjust bracket position accordingly.
- Making sure that toilet mounting holes align with brackets, insert the two plastic flange bushings into the toilet mounting holes and secure the toilet to the mounting brackets with the two flat head wood screws provided (fig. 13). Be sure to drive fasteners into mounting brackets at a downward angle.
- Press the decorative screw covers over the flange bushings (fig. 14).
- Turn on electrical and water supplies, and test toilet for proper operation.



Dometic Corporation, Sanitation Division  
13128 State Rt. 226, P.O. Box 38  
Big Prairie, OH 44611 USA  
1-800-321-9886 • Fax: 330-496-3097  
www.Dometic.com